

Verano[®] MAKE THIS YOUR MOMENT



COLLECTIE JALOEZIEËN

LICHTREGULERING EN PRIVACY

Raamdecoratie wordt niet alleen decoratief, maar ook functioneel toegepast. Een van de belangrijkste eigenschappen van raamdecoratie is het weren van invallend zonlicht. Invallend zonlicht zorgt voor oververhitting en heeft een negatief effect op het zichtcomfort. De mate van licht- en warmtewering is afhankelijk van de kleur en het materiaal van de raamdecoratie.

Wist je dat raamdecoratie tevens een relatief onbekend wapen is om energie te besparen? De isolatiewaarde van ramen, dus hoe goed (of slecht) de ramen warmte in huis houden, wordt sterk verbeterd door de toevoeging van raamdecoratie doordat er met raamdecoratie een extra luchtspouw wordt gecreëerd. Raamdecoratie kan de isolatiewaarde van enkel glas tot wel 60% verhogen!

In deze brochure vind je alle kleuren en eigenschappen van de collectie jaloezieën. Wil je meer informatie over onze raamdecoratie collectie? Bekijk dan onze raamdecoratie brochure.

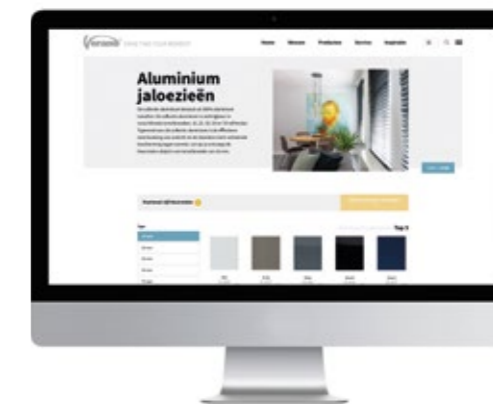




GRATIS KLEURSTALEN

Op www.verano.nl/gratis-kleurstalen kun je gratis vijf kleurstalen aanvragen.

Op deze manier kun je de materialen voelen en de kleuren 'matchen' met elementen uit jouw interieur.



Scan deze QR-code met de camera van je smartphone en vraag direct je gratis kleurstalen aan!

COLLECTIE ALUMINIUM

De collectie aluminium bestaat uit 100% aluminium lamellen. De collectie aluminium is verkrijgbaar in verschillende lamelbreedtes: 16, 25, 35, 50 en 70 millimeter. Typerend voor de collectie aluminium is de effectieve weerkaatsing van zonlicht en de daardoor sterk verbeterde bescherming tegen warmte.

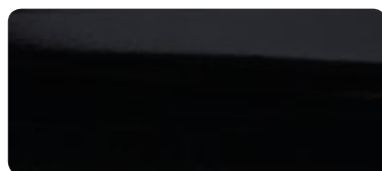


ALUMINIUM



10.2753 PG: **0**

16 25 35 50 70



10.2412 PG: **1**

16 25 35 50 70



10.2332 PG: **0**

16 25 35 50 70



10.2375 PG: **2**

16 25 35 50 70



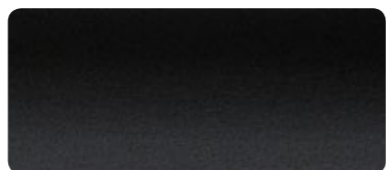
10.2758 PG: **0**

16 25 35 50 70



10.2415 PG: **1**

16 25 35 50 70



10.2414 PG: **2**

16 25 35 50 70



10.2743 PG: **0**

16 25 35 50 70



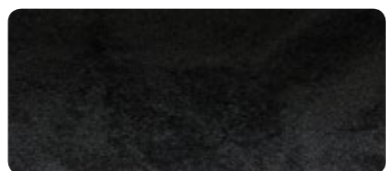
10.2733 PG: **2**

16 25 35 50 70



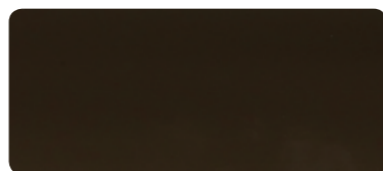
10.2729 PG: **1**

16 25 35 50 70



10.2527 PG: **2**

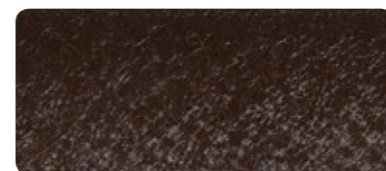
16 25 35 50 70



10.2460 PG: **1**

16 25 35 50 70

ALUMINIUM



10.2731 PG: **3**

16 25 35 50 70



10.2502 PG: **2**

16 25 35 50 70



10.2367 PG: **1**

16 25 35 50 70



10.2746 PG: **0**

16 25 35 50 70



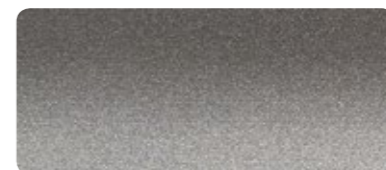
10.2363 PG: **1**

16 25 35 50 70



10.2748 PG: **0**

16 25 35 50 70



10.2747 PG: **0**

16 25 35 50 70



10.2459 PG: **1**

16 25 35 50 70



10.2356 PG: **1**

16 25 35 50 70



10.2716 PG: **2**

16 25 35 50 70



10.2525 PG: **2**

16 25 35 50 70



10.2277 PG: **1**

16 25 35 50 70

ALUMINIUM



10.2706 PG: **1**

16 25 35 50 70



10.2708 PG: **2**

16 25 35 50 70



10.2419 PG: **1**

16 25 35 50 70



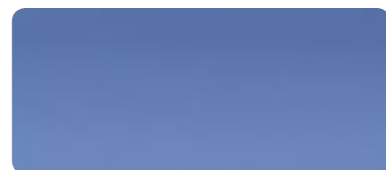
10.2302 PG: **2**

16 25 35 50 70



10.2420 PG: **1**

16 25 35 50 70



10.2707 PG: **1**

16 25 35 50 70



10.2335 PG: **1**

16 25 35 50 70



10.2709 PG: **2**

16 25 35 50 70



10.2341 PG: **2**

16 25 35 50 70



10.2711 PG: **2**

16 25 35 50 70



10.2429 PG: **1**

16 25 35 50 70



10.2437 PG: **1**

16 25 35 50 70

ALUMINIUM



10.2710 PG: **2**

16 25 35 50 70



10.2436 PG: **1**

16 25 35 50 70



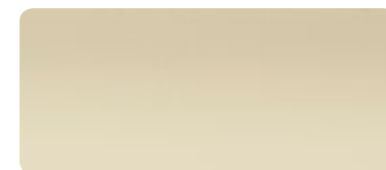
10.2712 PG: **2**

16 25 35 50 70



10.2446 PG: **1**

16 25 35 50 70



10.2347 PG: **0**

16 25 35 50 70



10.2713 PG: **3**

16 25 35 50 70



10.2271 PG: **2**

16 25 35 50 70



10.2370 PG: **1**

16 25 35 50 70



10.2489 PG: **2**

16 25 35 50 70



10.2276 PG: **0**

16 25 35 50 70



10.2358 PG: **1**

16 25 35 50 70



10.2718 PG: **2**

16 25 35 50 70

ALUMINIUM



10.2464 PG: ①

16 25 35 50 70



10.2719 PG: ③

16 25 35 50 70



10.2720 PG: ③

16 25 35 50 70



10.2472 PG: ①

16 25 35 50 70



10.2721 PG: ③

16 25 35 50 70



10.2471 PG: ①

16 25 35 50 70



10.2715 PG: ②

16 25 35 50 70



10.2448 PG: ①

16 25 35 50 70



10.2724 PG: ③

16 25 35 50 70



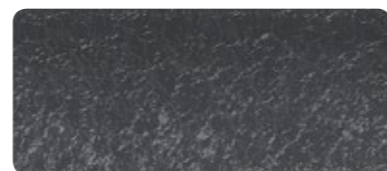
10.2723 PG: ②

16 25 35 50 70



10.2722 PG: ②

16 25 35 50 70



10.2732 PG: ③

16 25 35 50 70

ALUMINIUM



10.2530 PG: ②

16 25 35 50 70



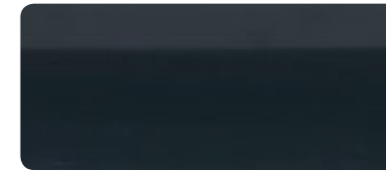
10.2745 PG: ①

16 25 35 50 70



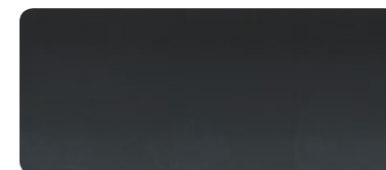
10.2372 PG: ②

16 25 35 50 70



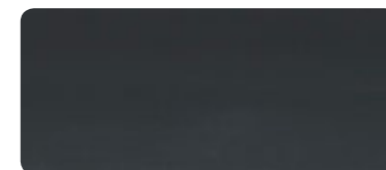
10.2738 PG: ①

16 25 35 50 70



10.2739 PG: ①

16 25 35 50 70



10.2757 PG: ①

16 25 35 50 70



10.2704 PG: ②

16 25 35 50 70



10.2705 PG: ②

16 25 35 50 70



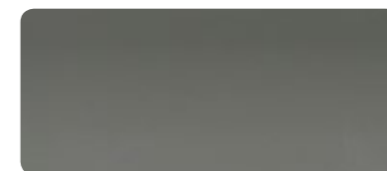
10.2411 PG: ②

16 25 35 50 70



10.2331 PG: ①

16 25 35 50 70



10.2735 PG: ①

16 25 35 50 70



10.2737 PG: ①

16 25 35 50 70

ALUMINIUM



10.2703 PG: ②

16 25 35 50 70



10.2736 PG: ①

16 25 35 50 70



10.2702 PG: ②

16 25 35 50 70



10.2756 PG: ①

16 25 35 50 70



10.2755 PG: ①

16 25 35 50 70



10.2744 PG: ①

16 25 35 50 70



10.2408 PG: ③

16 25 35 50 70



10.2275 PG: ①

16 25 35 50 70



10.2291 PG: ①

16 25 35 50 70



10.2294 PG: ②

16 25 35 50 70



10.2525 PG: ②

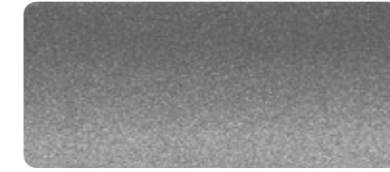
16 25 35 50 70



10.2734 PG: ②

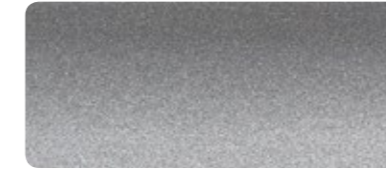
16 25 35 50 70

ALUMINIUM



10.2003 PG: ①

16 25 35 50 70



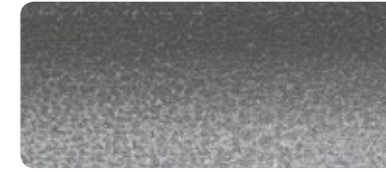
10.2479 PG: ①

16 25 35 50 70



10.2749 PG: ①

16 25 35 50 70



10.2365 PG: ①

16 25 35 50 70



10.2750 PG: ①

16 25 35 50 70



10.2480 PG: ①

16 25 35 50 70



10.2300 PG: ②

16 25 35 50 70



10.2751 PG: ①

16 25 35 50 70



10.2301 PG: ①

16 25 35 50 70



10.2726 PG: ①

16 25 35 50 70



10.2004 PG: ①

16 25 35 50 70



10.2303 PG: ②

16 25 35 50 70

ALUMINIUM



10.2760 PG: **2**

16 25 35 50 70



10.2457 PG: **1**

16 25 35 50 70



10.2717 PG: **2**

16 25 35 50 70



10.2348 PG: **1**

16 25 35 50 70



10.2456 PG: **0**

16 25 35 50 70



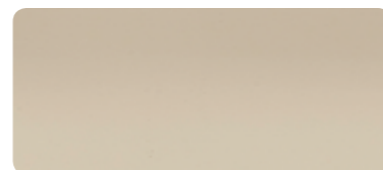
10.2714 PG: **1**

16 25 35 50 70



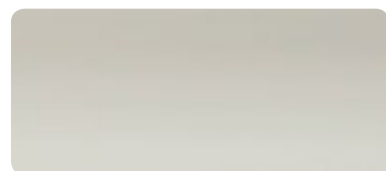
10.2350 PG: **1**

16 25 35 50 70



10.2355 PG: **0**

16 25 35 50 70



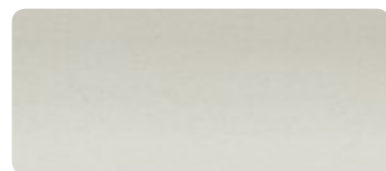
10.2407 PG: **1**

16 25 35 50 70



10.2701 PG: **2**

16 25 35 50 70



10.2531 PG: **1**

16 25 35 50 70



10.2754 PG: **0**

16 25 35 50 70

ALUMINIUM



10.2741 PG: **0**

16 25 35 50 70



10.2740 PG: **0**

16 25 35 50 70



10.2727 PG: **2**

16 25 35 50 70



10.2330 PG: **0**

16 25 35 50 70



10.2306 PG: **2**

16 25 35 50 70



10.2608 PG: **1**

16 25 35 50 70



10.2405 PG: **1**

16 25 35 50 70



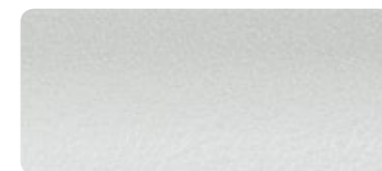
10.2455 PG: **2**

16 25 35 50 70



10.2373 PG: **2**

16 25 35 50 70



10.2369 PG: **2**

16 25 35 50 70



10.2700 PG: **2**

16 25 35 50 70



10.2730 PG: **3**

16 25 35 50 70

ALUMINIUM



10.2371 PG: **2**

16 25 35 50 70



10.2742 PG: **0**

16 25 35 50 70



10.2759 PG: **0**

16 25 35 50 70



10.2728 PG: **2**

16 25 35 50 70



10.2305 PG: **2**

16 25 35 50 70



10.2402 PG: **3**

16 25 35 50 70



10.2005 PG: **0**

16 25 35 50 70



10.2752 PG: **0**

16 25 35 50 70



10.2006 PG: **0**

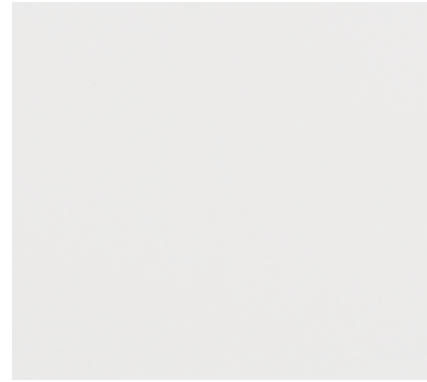
16 25 35 50 70

COLLECTIE HOUT

De collectie hout bestaat uit 100% houten lamellen van bamboe, lindehout of populierenhout. De collectie hout is verkrijgbaar in verschillende lamelbreedtes: 50 en 70 millimeter. Typerend voor de collectie hout is dat de houten jaloezieën vervaardigd zijn uit hoogwaardig FSC-gecertificeerd hout.



HOUT



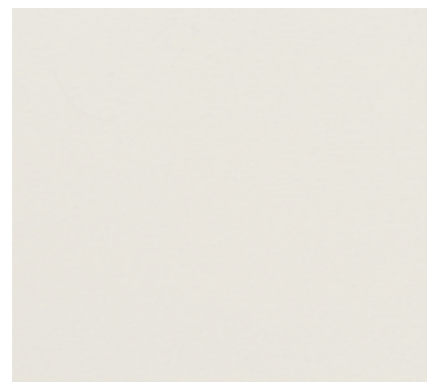
30.1601 PG: **1**
 Lindehout
 max ↔ 2650 mm 50 65



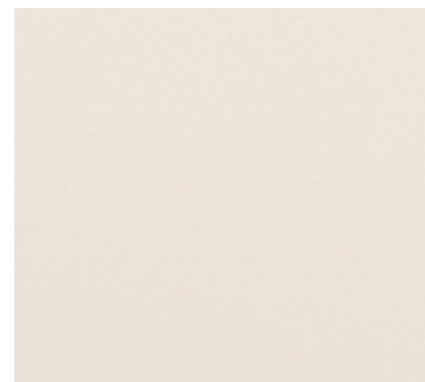
30.1020 PG: **0**
 Lindehout
 50 mm max ↔ 3450 mm 50 65
 65 mm max ↔ 2700 mm



30.1202 PG: **3**
 Lindehout
 max ↔ 2350 mm 50 65



30.1603 PG: **1**
 Lindehout
 max ↔ 2650 mm 50 65



30.1604 PG: **2**
 Lindehout
 max ↔ 2650 mm 50 65



30.1012 PG: **0**
 Lindehout
 50 mm max ↔ 3450 mm 50 65
 65 mm max ↔ 2700 mm

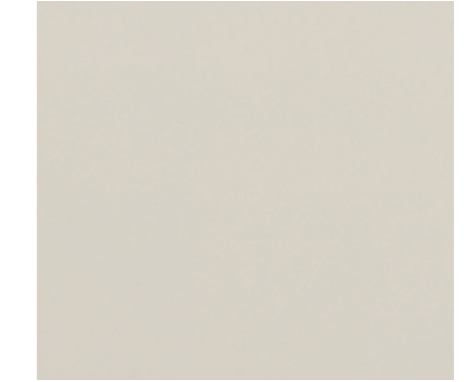
HOUT



30.1608 PG: **1**
 Lindehout
 max ↔ 2650 mm 50 65



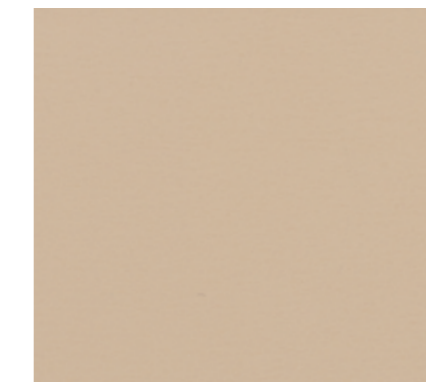
30.1606 PG: **2**
 Lindehout
 max ↔ 2650 mm 50 65



30.1607 PG: **2**
 Lindehout
 max ↔ 2650 mm 50 65



30.1004 PG: **1**
 Lindehout
 max ↔ 2650 mm 50 65



30.1609 PG: **2**
 Lindehout
 max ↔ 2650 mm 50 65



30.1610 PG: **1**
 Lindehout
 max ↔ 2650 mm 50 65

HOUT



30.1611 PG: ①
Lindehout
max ↔ 2650 mm 50 65



30.1620 PG: ②
Lindehout
max ↔ 2650 mm 50 65



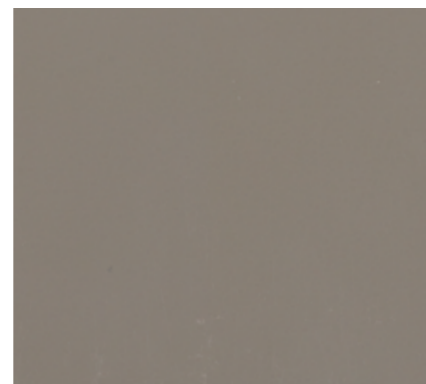
30.1619 PG: ①
Lindehout
max ↔ 2650 mm 50 65



30.1612 PG: ①
Lindehout
max ↔ 2650 mm 50 65

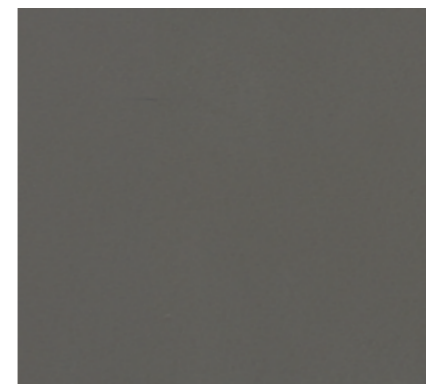


30.1613 PG: ①
Lindehout
max ↔ 2650 mm 50 65



30.1614 PG: ②
Lindehout
max ↔ 2650 mm 50 65

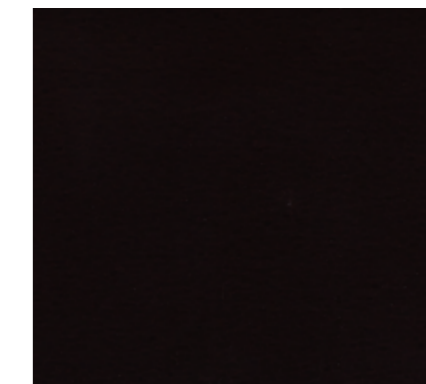
HOUT



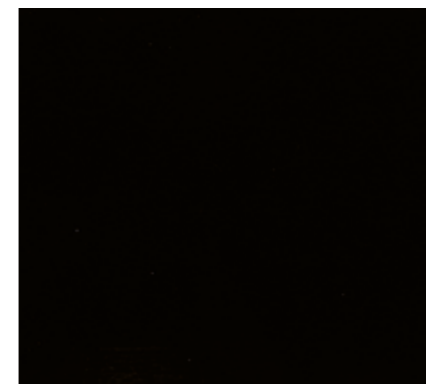
30.1615 PG: ①
Lindehout
max ↔ 2650 mm 50 65



30.1616 PG: ②
Lindehout
max ↔ 2650 mm 50 65



30.1618 PG: ①
Lindehout
max ↔ 2650 mm 50 65



30.1201 PG: ③
Lindehout
max ↔ 2350 mm 50 65

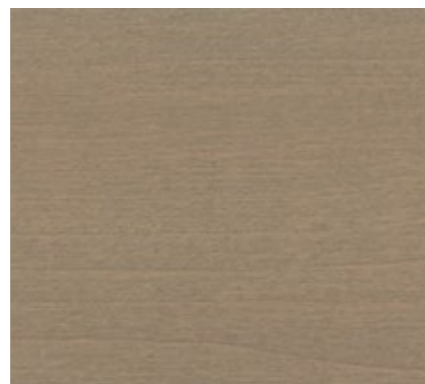


30.1002 PG: ①
Lindehout
50 mm max ↔ 3450 mm 50 65
65 mm max ↔ 2700 mm

HOUT



30.1112 PG: ②
Lindehout
max ↔ 2650 mm 50 65



30.1016 PG: ①
Lindehout
max ↔ 2650 mm 50 65



30.1621 PG: ②
Populierenhout
max ↔ 2390 mm 50 65



30.1211 PG: ③
Populierenhout
max ↔ 2450 mm 50 65

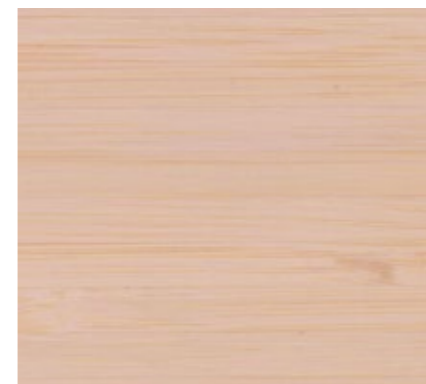


30.1110 PG: ②
Lindehout
max ↔ 2650 mm 50 65



30.1209 PG: ③
Populierenhout
max ↔ 2450 mm 50 65

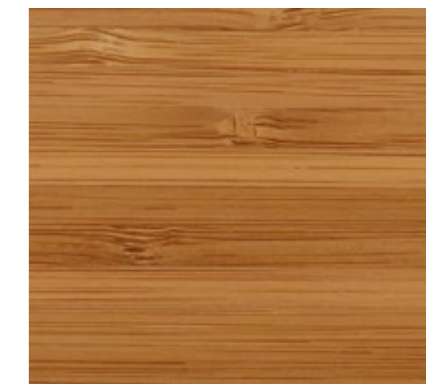
HOUT



30.1105 PG: ②
Bamboe
max ↔ 2350 mm 50 65



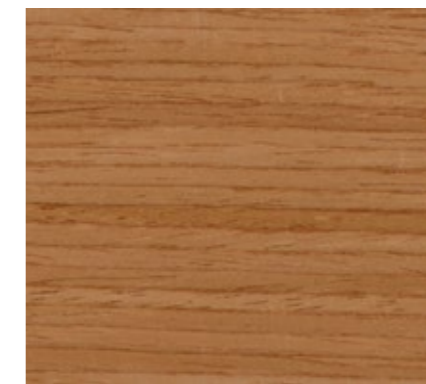
30.1011 PG: ①
Lindehout
max ↔ 2650 mm 50 65



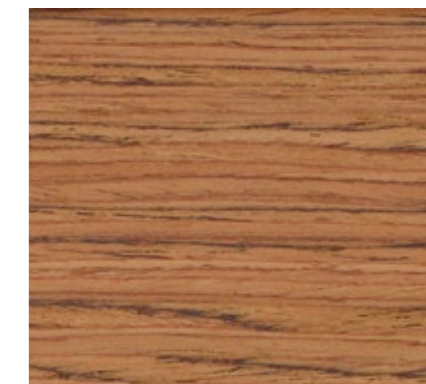
30.1103 PG: ②
Bamboe
max ↔ 2350 mm 50 65



30.1102 PG: ②
Bamboe
max ↔ 2350 mm 50 65



30.1206 PG: ③
Populierenhout
max ↔ 2450 mm 50 65

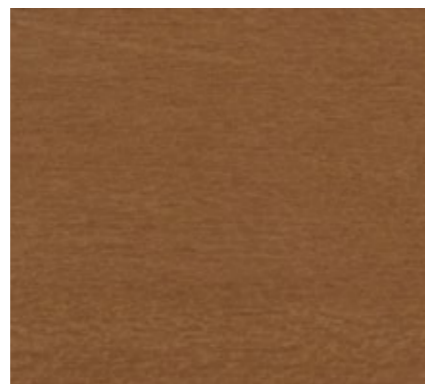


30.1208 PG: ③
Populierenhout
max ↔ 2450 mm 50 65

HOUT



30.1109 PG: **2**
Lindehout
max ↔ 2650 mm 50 65



30.1001 PG: **1**
Lindehout
max ↔ 2650 mm 50 65



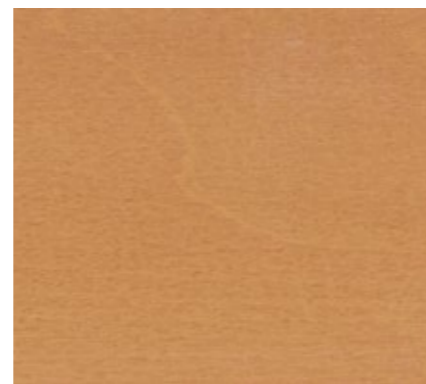
30.1622 PG: **2**
Populierenhout
max ↔ 2390 mm 50 65



30.1018 PG: **1**
Lindehout
max ↔ 2650 mm 50 65

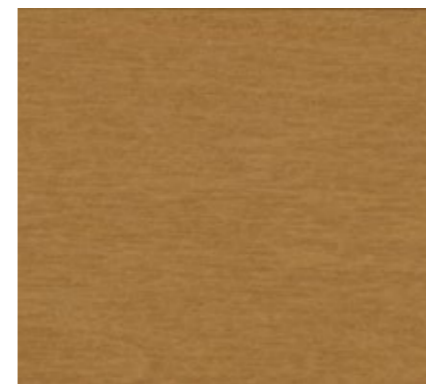


30.1210 PG: **3**
Populierenhout
max ↔ 2450 mm 50 65

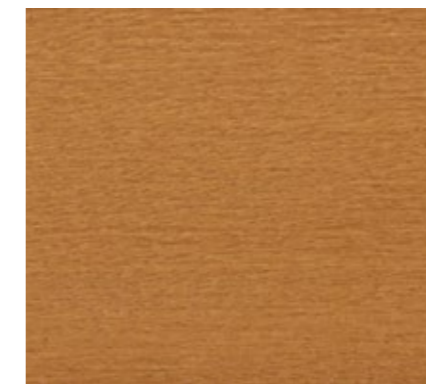


30.1010 PG: **1**
Lindehout
max ↔ 2650 mm 50 65

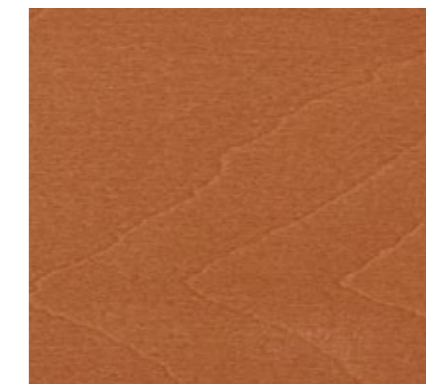
HOUT



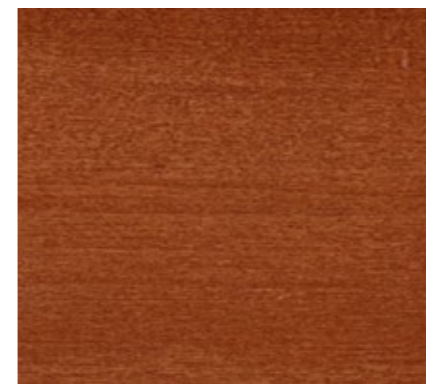
30.1013 PG: **1**
Lindehout
max ↔ 2650 mm 50 65



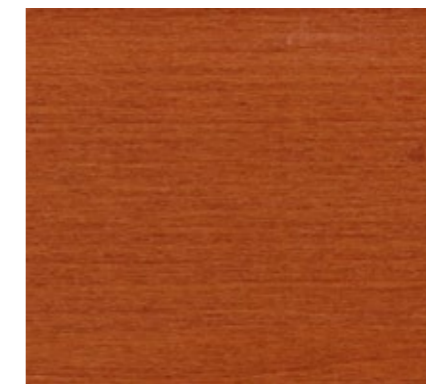
30.1007 PG: **1**
Lindehout
max ↔ 2650 mm 50 65



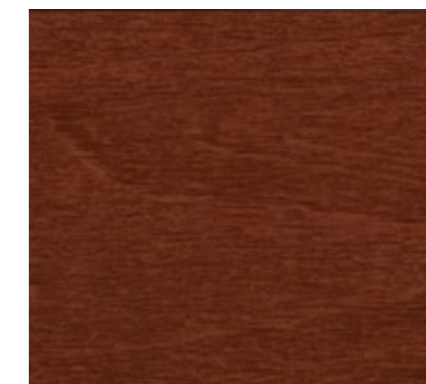
30.1017 PG: **1**
Lindehout
max ↔ 2650 mm 50 65



30.1005 PG: **1**
Lindehout
max ↔ 2650 mm 50 65

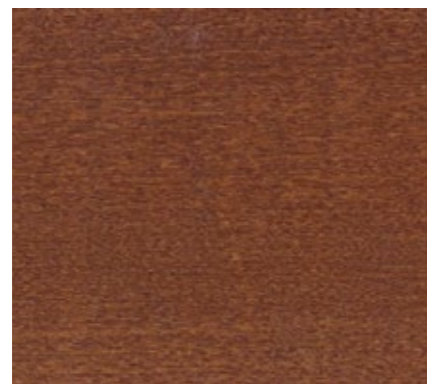


30.1014 PG: **1**
Lindehout
max ↔ 2650 mm 50 65



30.1015 PG: **1**
Lindehout
max ↔ 2650 mm 50 65

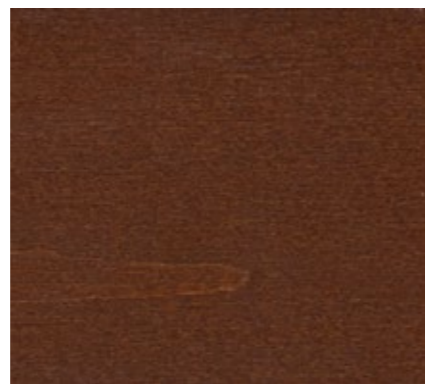
HOUT

**30.1009**

PG: ①

Lindehout
max ↔ 2650 mm

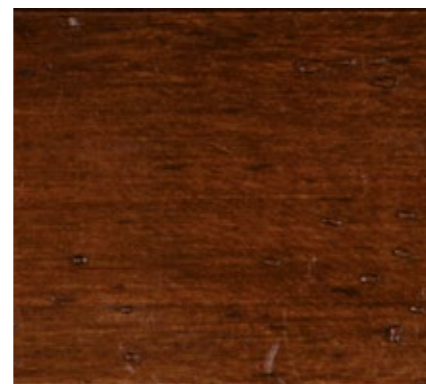
• 50 65

**30.1019**

PG: ①

Lindehout
max ↔ 2650 mm

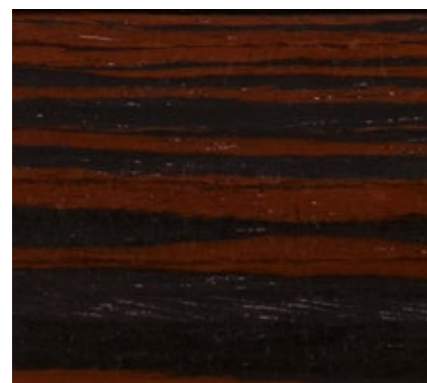
• 50 65

**30.1113**

PG: ②

Lindehout
max ↔ 2650 mm

• 50 65

**30.1207**

PG: ③

Populierenhout
max ↔ 2450 mm

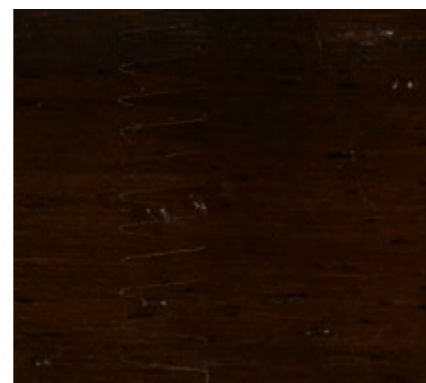
• 50 65

**30.1111**

PG: ②

Lindehout
max ↔ 2650 mm

• 50 65

**30.1108**

PG: ②

Lindehout
max ↔ 2650 mm

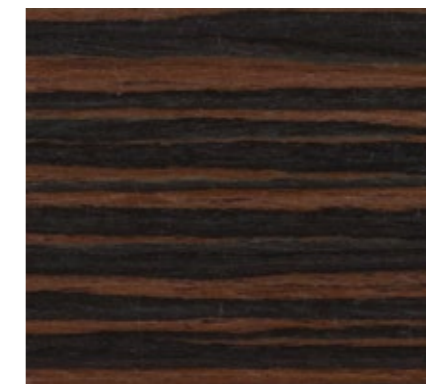
• 50 65

**30.1106**

PG: ②

Lindehout
max ↔ 2650 mm

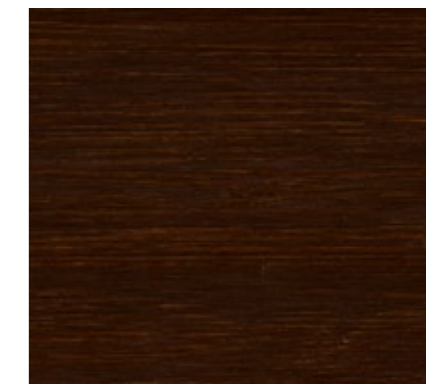
• 50 65

**30.1205**

PG: ③

Populierenhout
max ↔ 2450 mm

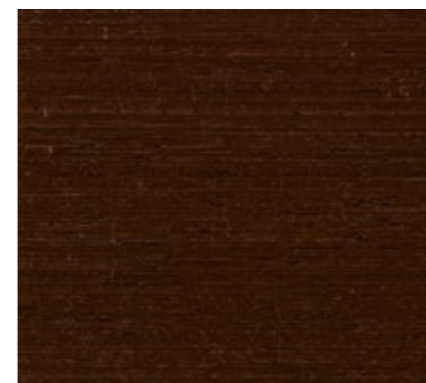
• 50 65

**30.1104**

PG: ②

Bamboe
max ↔ 2350 mm

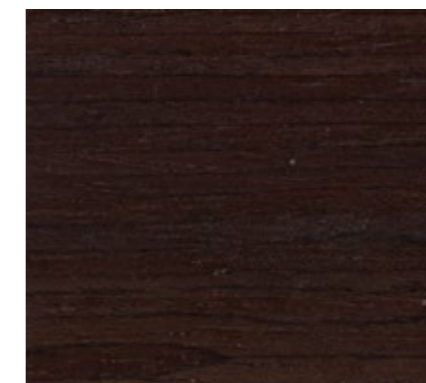
• 50 65

**30.1203**

PG: ③

Populierenhout
max ↔ 2430 mm

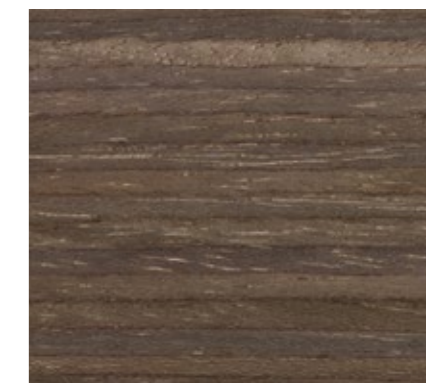
• 50 65

**30.1204**

PG: ③

Populierenhout
max ↔ 2450 mm

• 50 65

**30.1623**

PG: ②

Populierenhout
max ↔ 2390 mm

• 50 65

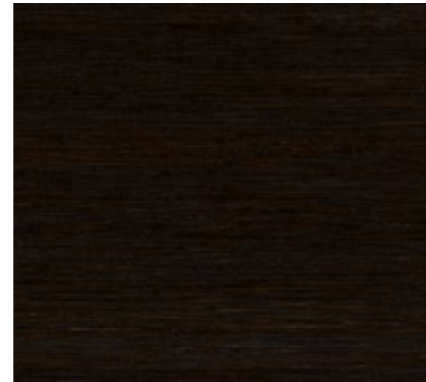
HOUT

**30.1107**PG: **2**

Lindehout
 max ↔ 2650 mm • 50 65

**30.1006**PG: **1**

Lindehout
 max ↔ 2650 mm • 50 65

**30.1101**PG: **2**

Bamboe
 max ↔ 2350 mm • 50 65

**30.1003**PG: **1**

Lindehout
 max ↔ 2650 mm • 50 65

MATERIAAL- EIGENSCHAPPEN

MATERIAAL

De materialen in de collectie jaloezieën zijn aluminium, bamboe, lindehout en populierenhout. Aluminium is sterk, duurzaam en onderhoudsarm. Bamboe hout is niet afkomstig van een boom maar van gras. Bamboe hout is zeer duurzaam en milieuvriendelijk. Lindehout is zacht en trekt amper. Naast lindehout, is ook populierenhout zacht en duurzaam.



Jaloezie | Kleur 30.1601

MATERIAALWIJZER

Onder de diverse materialen in de collectie jaloezieën vind je symbolen die de eigenschappen van het materiaal weergeven. Met behulp van de materiaalwijzer hieronder kun je bepalen welk materiaal het beste bij jouw wensen past. Heb je vragen over specifieke materiaaleigenschappen? Ga dan langs bij de Verano® partner. Je vindt de dichtstbijzijnde partner snel en eenvoudig op www.verano.nl.

30.1601	Kleurnummer	
PG: 3	Prijsgroep	
↔	Productbreedtes	(mm)
50	Lamelbreedte	(mm)



 facebook.com/verano.nl
facebook.com/verano.be

 [veranobv](https://instagram.com/veranobv)

 pinterest.com/veranobv

 [Verano® Zonwering & Rolluiken](https://www.youtube.com/Verano%20Zonwering%20&%20Rolluiken)

 www.verano.nl
www.verano.be

Aan deze brochure kunnen geen rechten worden ontleend.
22054619-191119

