

Verano<sup>®</sup> MAKE THIS YOUR MOMENT



COLLECTIE LAMELLEN

## LICHTREGULERING EN PRIVACY

Raamdecoratie wordt niet alleen decoratief, maar ook functioneel toegepast. Een van de belangrijkste eigenschappen van raamdecoratie is het weren van invallend zonlicht. Invallend zonlicht zorgt voor oververhitting en heeft een negatief effect op het zichtcomfort. De mate van licht- en warmtewering is afhankelijk van de kleur en het materiaal van de raamdecoratie.

Wist je dat raamdecoratie tevens een relatief onbekend wapen is om energie te besparen? De isolatiewaarde van ramen, dus hoe goed (of slecht) de ramen warmte in huis houden, wordt sterk verbeterd door de toevoeging van raamdecoratie doordat er met raamdecoratie een extra luchtspouw wordt gecreëerd. Raamdecoratie kan de isolatiewaarde van enkel glas tot wel 60% verhogen!

In deze brochure vind je alle kleuren en eigenschappen van de collectie lamellen. Wil je meer informatie over onze raamdecoratie collectie? Bekijk dan onze raamdecoratie brochure.

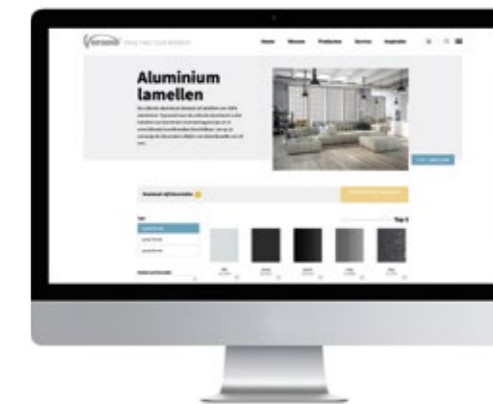




## GRATIS KLEURSTALEN

Op [www.verano.nl/gratis-kleurstalen](http://www.verano.nl/gratis-kleurstalen) kun je gratis vijf kleurstalen aanvragen.

Op deze manier kun je de materialen voelen en de kleuren 'matchen' met elementen uit jouw interieur.



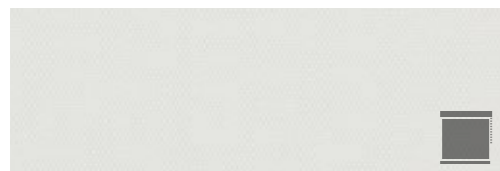
Scan deze QR-code met de camera van je smartphone en vraag direct je gratis kleurstalen aan!


## COLLECTIE STOF

De collectie stof bestaat uit 100% polyester (PES) stoffen, stoffen bestaande uit een combinatie van polyester en PVC en stoffen uit 100% gerecycled PET (als in PET flessen). De collectie stof is verkrijgbaar in drie verschillende transparanties: transparant, semi-transparant en verduisterend plus. Typisch voor de collectie stof is dat de stoffen een prachtige lichtfiltering en uitgebreide mogelijkheden in texturen bieden.




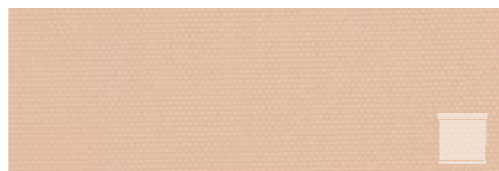
## STOF



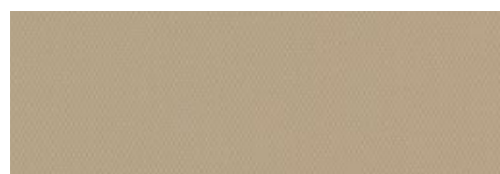
**76.0035** PG: 0   
100% PES  
89 127




**76.0034** PG: 0   
100% PES  
89 127




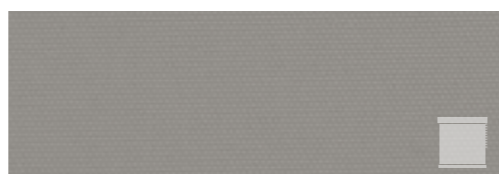
**76.0033** PG: 0   
100% PES  
89 127



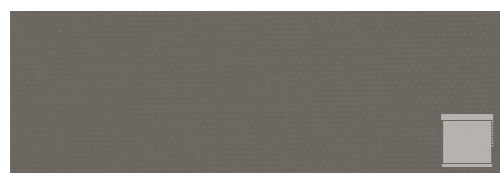
**76.0032** PG: 0   
100% PES  
89 127




**76.0031** PG: 0   
100% PES  
89 127




**76.0030** PG: 0   
100% PES  
89 127



**76.0036** PG: 0   
100% PES  
89 127

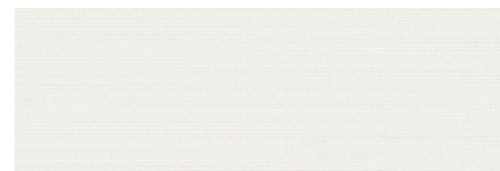



**76.0029** PG: 0   
100% PES  
89 127

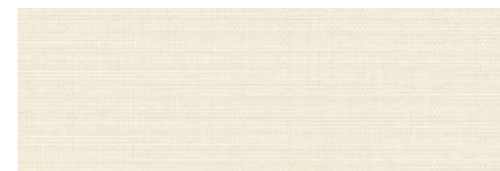



**76.0028** PG: 0   
100% PES  
89 127

## STOF




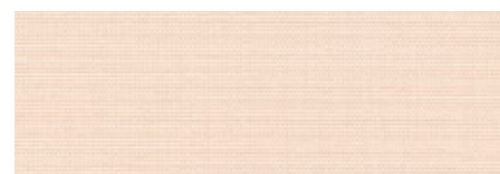
**76.0001** PG: 1   
100% PES  
89 127  
TS: 15  
RS: 77  
AS: 8



**76.0002** PG: 1   
100% PES  
89 127  
TS: 14  
RS: 68  
AS: 18



**76.0003** PG: 1   
100% PES  
89 127  
TS: 14  
RS: 48  
AS: 38



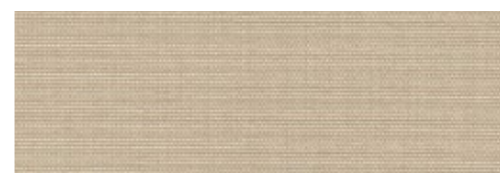
**76.0016** PG: 1   
100% PES  
89 127  
TS: 15  
RS: 62  
AS: 23



**76.0019** PG: 1   
100% PES  
89 127  
TS: 12  
RS: 44  
AS: 44




**76.0010** PG: 1   
100% PES  
89 127  
TS: 6  
RS: 15  
AS: 79



**76.0004** PG: 1   
100% PES  
89 127  
TS: 12  
RS: 42  
AS: 46



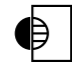
**76.0005** PG: 1   
100% PES  
89 127  
TS: 12  
RS: 47  
AS: 41



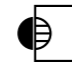
**76.0018** PG: 1   
100% PES  
89 127  
TS: 3  
RS: 11  
AS: 86

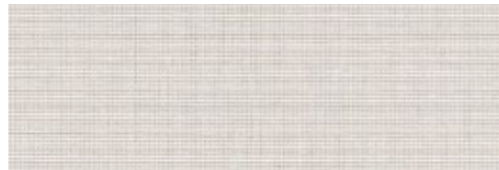
## STOF

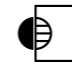


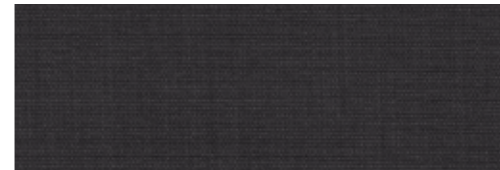
**76.0017** PG: 1   
100% PES  
● 89 127  
TS: 14  
RS: 58  
AS: 28



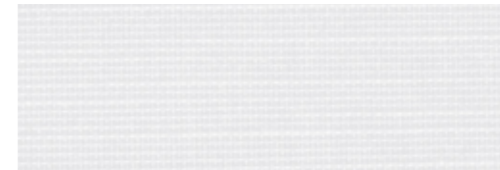
**76.0006** PG: 1   
100% PES  
● 89 127  
TS: 9  
RS: 23  
AS: 68



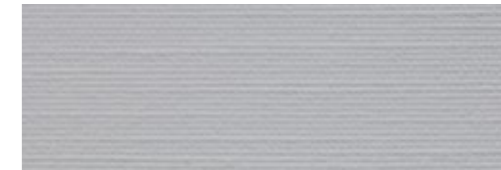
**76.0011** PG: 1   
100% PES  
● 89 127  
TS: 20  
RS: 55  
AS: 25



**76.0013** PG: 1   
100% PES  
● 89 127  
TS: 1  
RS: 4  
AS: 95




**76.0054** PG: 1   
100% PES  
● 89 127  
TS: 0  
RS: 80  
AS: 20




**76.0055** PG: 1   
100% PES  
● 89 127  
TS: 0  
RS: 69  
AS: 31



**76.0012** PG: 1   
100% PES  
● 89 127  
TS: 17  
RS: 54  
AS: 29



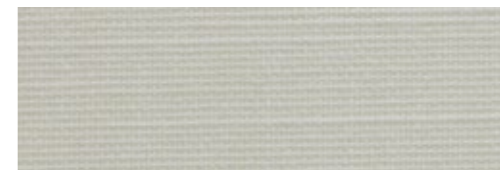
**76.0007** PG: 1   
100% PES  
● 89 127  
TS: 9  
RS: 27  
AS: 64



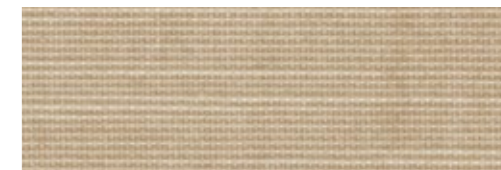
**76.0014** PG: 1   
100% PES  
● 89 127  
TS: 8  
RS: 31  
AS: 61




**76.0056** PG: 1   
100% PES  
● 89 127  
TS: 0  
RS: 45  
AS: 55




**76.0057** PG: 1   
100% PES  
● 89 127  
TS: 43  
RS: 53  
AS: 4




**76.0058** PG: 1   
100% PES  
● 89 127  
TS: 31  
RS: 51  
AS: 18



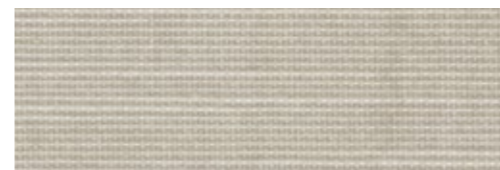
**76.0015** PG: 1   
100% PES  
● 89 127  
TS: 5  
RS: 8  
AS: 87



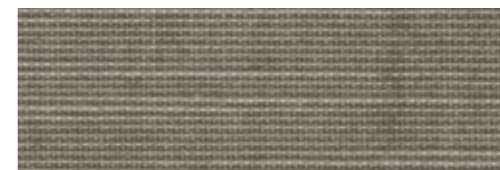
**76.0008** PG: 1   
100% PES  
● 89 127  
TS: 11  
RS: 31  
AS: 58




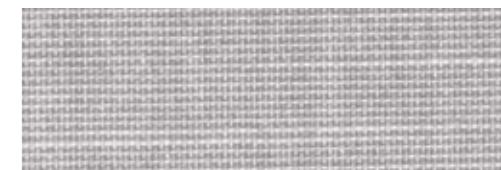
**76.0009** PG: 1   
100% PES  
● 89 127  
TS: 3  
RS: 8  
AS: 89




**76.0059** PG: 1   
100% PES  
● 89 127  
TS: 34  
RS: 41  
AS: 25




**76.0061** PG: 1   
100% PES  
● 89 127  
TS: 22  
RS: 32  
AS: 46

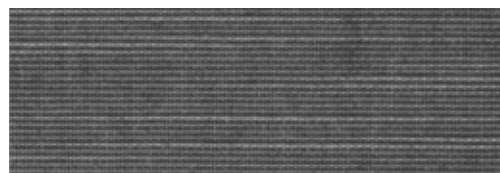



**76.0060** PG: 1   
100% PES  
● 89 127  
TS: 27  
RS: 45  
AS: 28

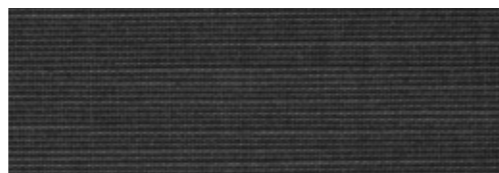
## STOF



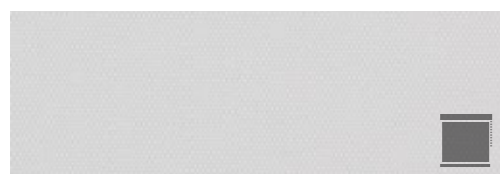
**76.0062** PG: 1   
100% PES  
● 89 127  
TS: 11  
RS: 24  
AS: 65




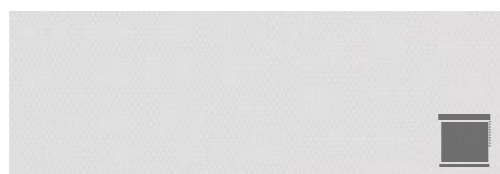
**76.0063** PG: 1   
100% PES  
● 89 127  
TS: 6  
RS: 15  
AS: 79




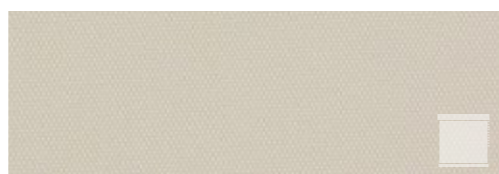
**76.0064** PG: 1   
100% PES  
● 89 127  
TS: 9  
RS: 6  
AS: 94




**76.0043** PG: 1   
100% PES  
● 89 127  
TS: 12  
RS: 52  
AS: 38




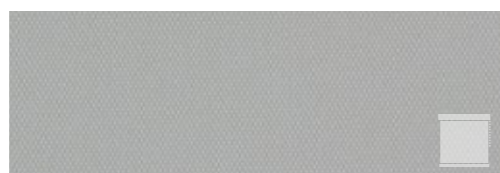
**76.0042** PG: 1   
100% PES  
● 89 127  
TS: 15  
RS: 45  
AS: 40




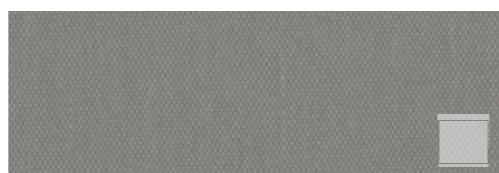
**76.0041** PG: 1   
100% PES  
● 89 127  
TS: 12  
RS: 51  
AS: 37




**76.0039** PG: 1   
100% PES  
● 89 127  
TS: 3  
RS: 11  
AS: 86



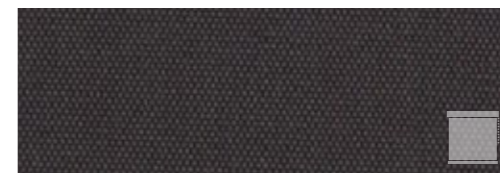
**76.0040** PG: 1   
100% PES  
● 89 127  
TS: 6  
RS: 26  
AS: 68



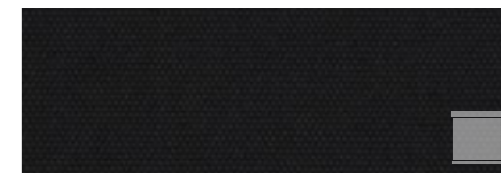
**76.0044** PG: 1   
100% PES  
● 89 127  
TS: 15  
RS: 44  
AS: 41



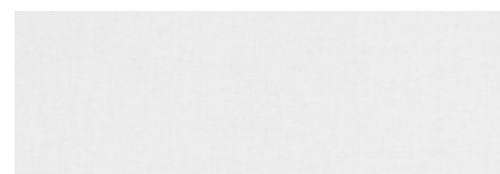
**76.0038** PG: 1   
100% PES  
● 89 127



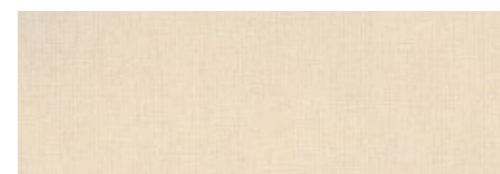
**76.0045** PG: 1   
100% PES  
● 89 127  
TS: 16  
RS: 51  
AS: 33





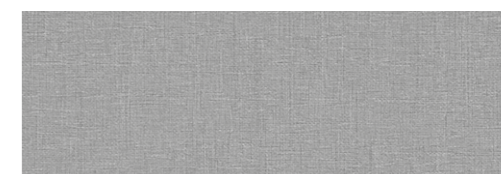
**76.0037** PG: 1   
100% PES  
● 89 127





**76.0085** PG: 2   
100% PES  
● 89 127  
TS: 85  
RS: 2  
AS: 13 




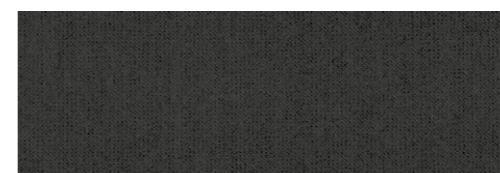
**76.0086** PG: 2   
100% PES  
● 89 127  
TS: 85  
RS: 2  
AS: 13 





**76.0088** PG: 2   
100% PES  
● 89 127  
TS: 86  
RS: 0  
AS: 14 





**76.0087** PG: 2   
100% PES  
● 89 127  
TS: 83  
RS: 3  
AS: 14 





**76.0089** PG: 2   
100% PES  
● 89 127  
TS: 83  
RS: 0  
AS: 17 

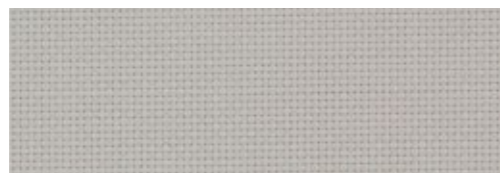




**76.0046** PG: 2   
70% PVC 30% PES  
● 89 127  
TS: 19  
RS: 60  
AS: 21 

## STOF





**76.0047** PG: **2**   
70% PVC 30% PES  
● 89 127 TS: 14  
RS: 40 AS: 46 





**76.0052** PG: **2**   
70% PVC 30% PES  
● 89 127 TS: 0  
RS: 55 AS: 45 




**76.0053** PG: **2**   
70% PVC 30% PES  
● 89 127 TS: 0  
RS: 80 AS: 20 




**76.0048** PG: **2**   
70% PVC 30% PES  
● 89 127 TS: 0  
RS: 3 AS: 97 



**76.0051** PG: **2**   
70% PVC 30% PES  
● 89 127 TS: 0  
RS: 36 AS: 64 





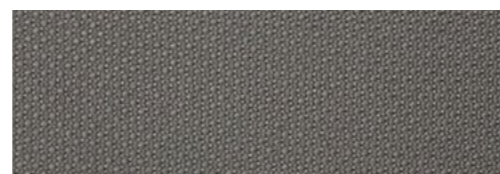
**76.0049** PG: **2**   
70% PVC 30% PES  
● 89 127 TS: 0  
RS: 16 AS: 84 



**76.0050** PG: **2**   
70% PVC 30% PES  
● 89 127 TS: 0  
RS: 68 AS: 32 



**76.0081** PG: **2**   
100% Recycled PET  
● 89 127 TS: 0  
RS: 6 AS: 94 





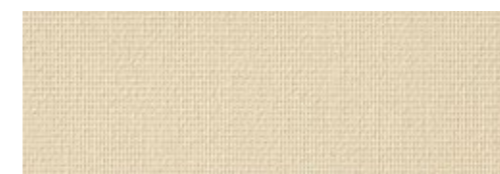
**76.0082** PG: **2**   
100% Recycled PET  
● 89 127 TS: 84  
RS: 5 AS: 11 


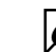


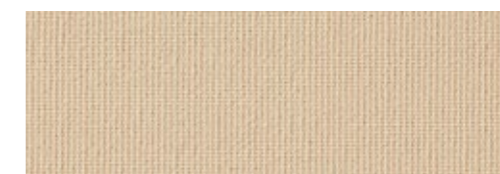
**76.0083** PG: **2**   
100% Recycled PET  
● 89 127 TS: 82  
RS: 5 AS: 13 





**76.0084** PG: **2**   
100% Recycled PET  
● 89 127 TS: 86  
RS: 4 AS: 10 





**76.0066** PG: **1**   
100% PES  
● 89 127 





**76.0067** PG: **1**   
100% PES  
● 89 127 





**76.0069** PG: **1**   
100% PES  
● 89 127 





**76.0070** PG: **1**   
100% PES  
● 89 127 





**76.0065** PG: **1**   
100% PES  
● 89 127 



**76.0068** PG: **1**   
100% PES  
● 89 127 





**76.0071** PG: **1**   
100% PES  
● 89 127 TS: 46  
RS: 54 AS: 0 

## STOF





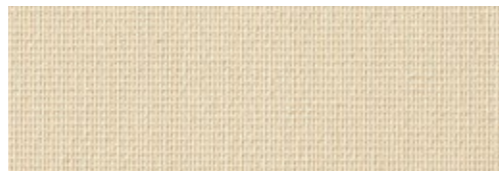
## STOF





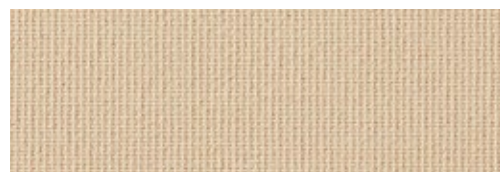
**76.0072** PG: 1    
100% PES  
• 89 127  
TS: 48  
RS: 52  
AS: 0





**76.0073** PG: 1    
100% PES  
• 89 127  
TS: 40  
RS: 53  
AS: 7





**76.0074** PG: 1    
100% PES  
• 89 127  
TS: 43  
RS: 53  
AS: 4





**76.0075** PG: 1    
100% PES  
• 89 127  
TS: 31  
RS: 51  
AS: 18





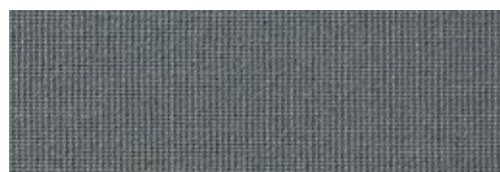
**76.0076** PG: 1    
100% PES  
• 89 127  
TS: 34  
RS: 41  
AS: 25





**76.0077** PG: 1    
100% PES  
• 89 127  
TS: 27  
RS: 45  
AS: 28





**76.0078** PG: 1    
100% PES  
• 89 127  
TS: 22  
RS: 32  
AS: 46



**76.0079** PG: 1    
100% PES  
• 89 127  
TS: 11  
RS: 24  
AS: 65




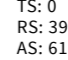
**76.0080** PG: 1    
100% PES  
• 89 127  
TS: 6  
RS: 15  
AS: 79

## STOF



**76.0024** PG: 3    
100% PES  
• 89 127  
TS: 0  
RS: 76  
AS: 24



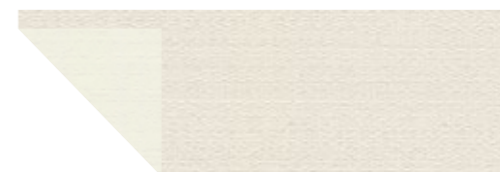
**76.0025** PG: 3    
100% PES  
• 89 127  
TS: 0  
RS: 39  
AS: 61



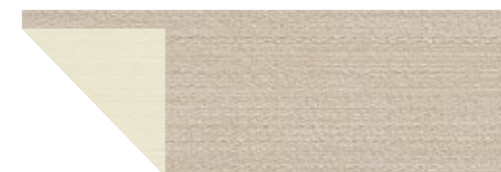
**76.0026** PG: 3    
100% PES  
• 89 127  
TS: 0  
RS: 16  
AS: 84



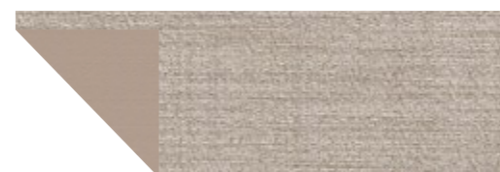
**76.0027** PG: 3    
100% PES  
• 89 127  
TS: 0  
RS: 19  
AS: 81



**76.0020** PG: 2    
100% PES  
• 89 127  
TS: 0  
RS: 65  
AS: 35


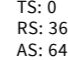


**76.0021** PG: 2    
100% PES  
• 89 127  
TS: 0  
RS: 59  
AS: 41



**76.0022** PG: 2    
100% PES  
• 89 127  
TS: 0  
RS: 48  
AS: 52

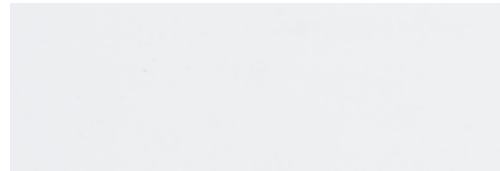


**76.0023** PG: 2    
100% PES  
• 89 127  
TS: 0  
RS: 36  
AS: 64

## COLLECTIE PVC

De collectie PVC bestaat uit lamellen van 100% PVC. Typisch voor de collectie PVC is dat lamellen van PVC geluiddempend en vlamvertragend zijn, beschermen tegen vocht en bacteriën en in verschillende lamelbreedtes beschikbaar zijn.

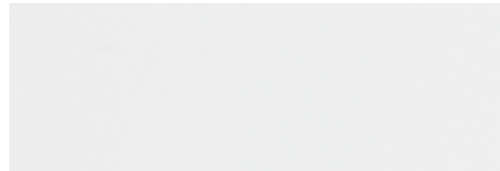




20.1000

PG: 0

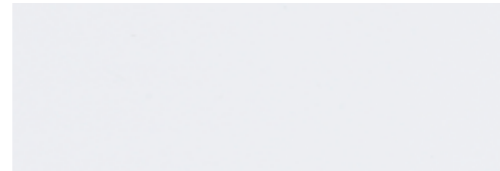
52 70 89 127



20.1001

PG: 1

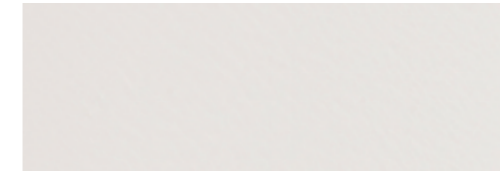
52 70 89 127



20.1715

PG: 1

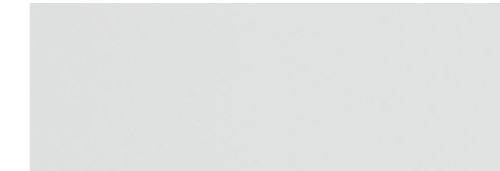
52 70 89 127



20.1707

PG: 1

52 70 89 127



20.1003

PG: 1

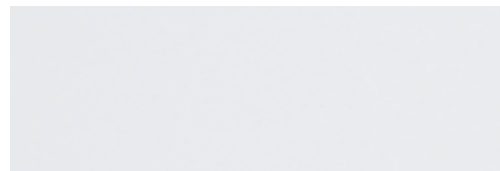
52 70 89 127



20.1119

PG: 0

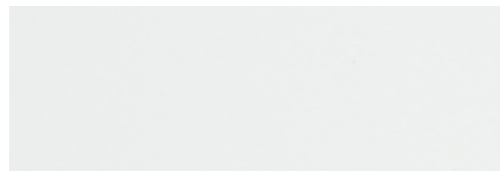
52 70 89 127



20.1720

PG: 1

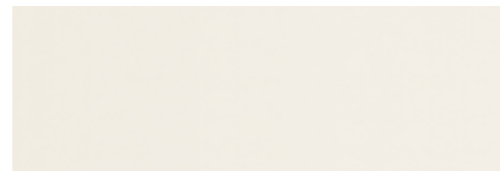
52 70 89 127



20.1719

PG: 1

52 70 89 127



20.1118

PG: 0

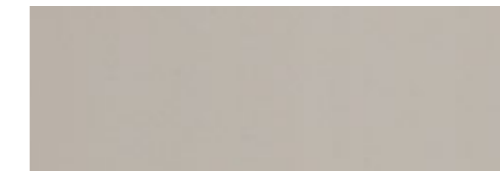
52 70 89 127



20.1706

PG: 1

52 70 89 127



20.1705

PG: 1

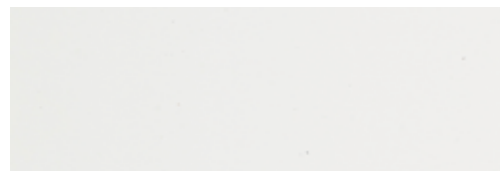
52 70 89 127



20.1710

PG: 1

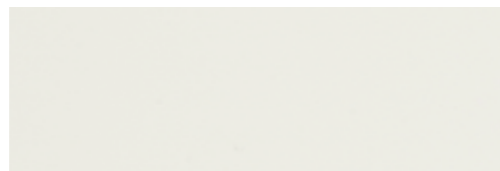
52 70 89 127



20.0022

PG: 0

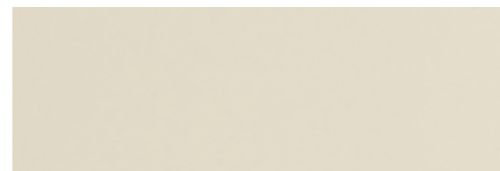
52 70 89 127



20.1120

PG: 1

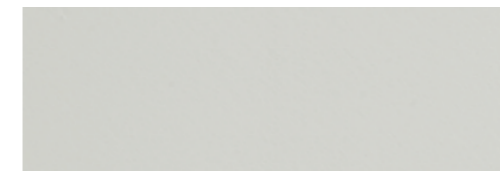
52 70 89 127



20.0044

PG: 1

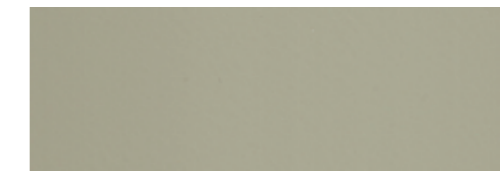
52 70 89 127



20.1708

PG: 1

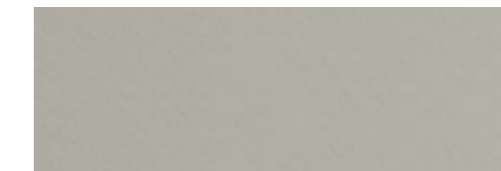
52 70 89 127



20.1704

PG: 1

52 70 89 127



20.1709

PG: 1

52 70 89 127





20.1703

PG: 1

52 70 89 127



20.1711

PG: 1

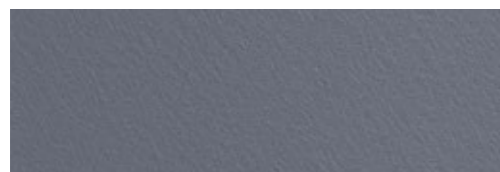
52 70 89 127



20.1716

PG: 1

52 70 89 127



20.1712

PG: 1

52 70 89 127



20.1702

PG: 1

52 70 89 127



20.1721

PG: 2

52 70 89 127



20.1283

PG: 1

52 70 89 127



20.0026

PG: 1

52 70 89 127



20.1722

PG: 1

52 70 89 127



20.1713

PG: 2

52 70 89 127



20.0096

PG: 1

52 70 89 127



20.0008

PG: 0

52 70 89 127



20.1717

PG: 2

52 70 89 127



20.1054

PG: 0

52 70 89 127



20.1714

PG: 1

52 70 89 127



20.0098

PG: 1

52 70 89 127



20.2102

PG: 0

52 70 89 127



20.1718

PG: 2

52 70 89 127





20.1056

PG: 0

52 70 89 127



20.0097

PG: 1

52 70 89 127



20.0009

PG: 0

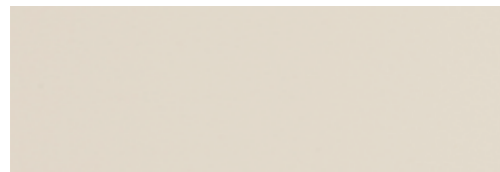
52 70 89 127



20.1700

PG: 2

52 70 89 127



20.1055

PG: 0

52 70 89 127



20.1087

PG: 0

52 70 89 127



20.1090

PG: 0

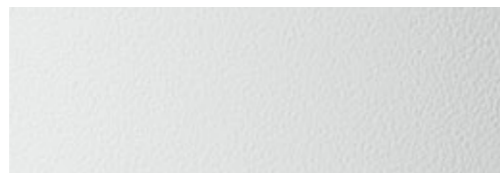
52 70 89 127



20.1089

PG: 0

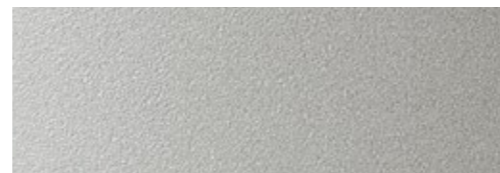
52 70 89 127



20.0035

PG: 1

52 70 89 127



20.1701

PG: 2

52 70 89 127

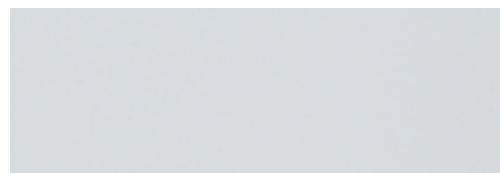


## COLLECTIE ALUMINIUM

De collectie aluminium bestaat uit lamellen van 100% aluminium. Typerend voor de collectie aluminium is dat lamellen van aluminium vlamvertragend zijn en in verschillende lamelbreedtes beschikbaar zijn.



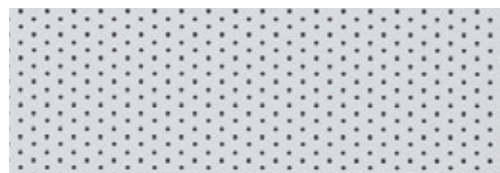
## ALUMINIUM



10.2005

PG: 1

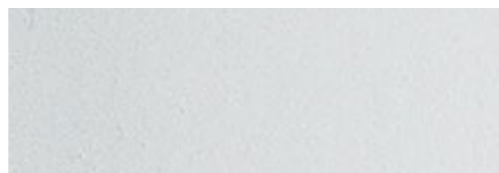
52 70 89



10.2373

PG: 2

52 70 89



10.2402

PG: 3

52 70 89



10.2006

PG: 1

52 70 89



10.2804

PG: 2

52 70 89



10.2305

PG: 2

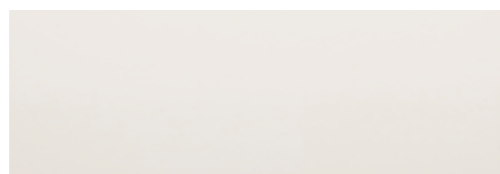
52 70 89



10.2730

PG: 3

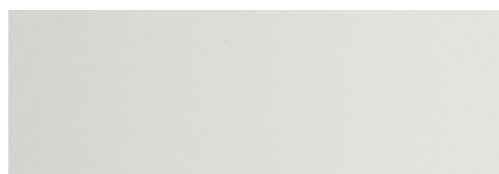
52 70 89



10.2801

PG: 2

52 70 89



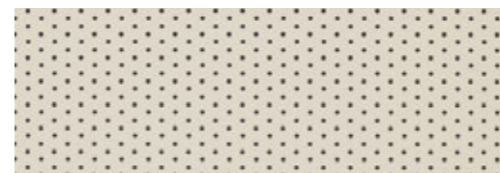
10.2608

PG: 2

52 70 89



## ALUMINIUM



10.2271

PG: 2

52 70 89



10.2276

PG: 1

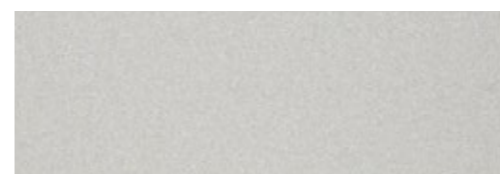
52 70 89



10.2330

PG: 1

52 70 89



10.2371

PG: 3

52 70 89



10.2303

PG: 2

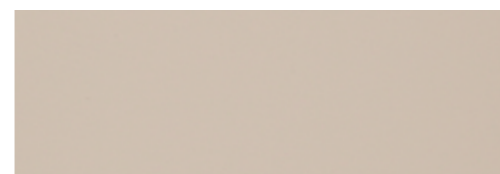
52 70 89



10.2355

PG: 1

52 70 89



10.2350

PG: 1

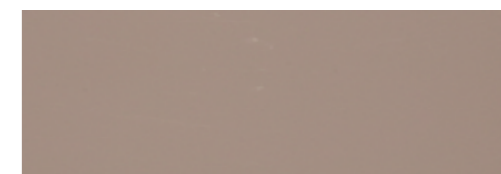
52 70 89



10.2803

PG: 2

52 70 89



10.2348

PG: 1

52 70 89



## ALUMINIUM



10.2802

PG: 1

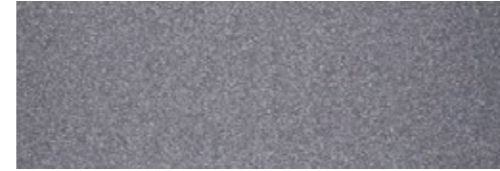
52 70 89



10.2301

PG: 1

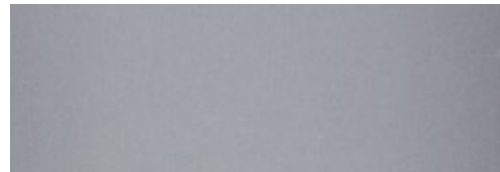
52 70 89



10.2003

PG: 1

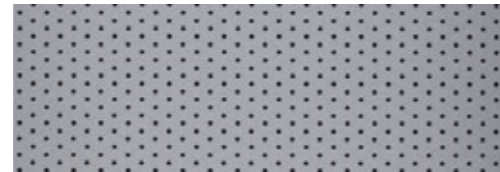
52 70 89



10.2291

PG: 1

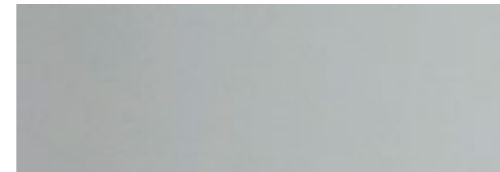
52 70 89



10.2294

PG: 2

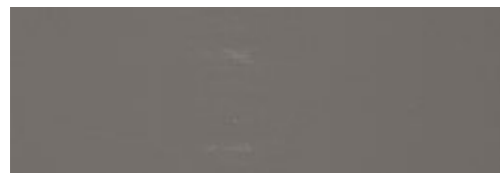
52 70 89



10.2275

PG: 1

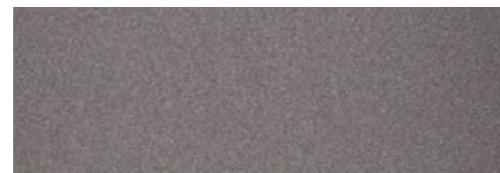
52 70 89



10.2331

PG: 1

52 70 89



10.2363

PG: 1

52 70 89



10.2800

PG: 2

52 70 89



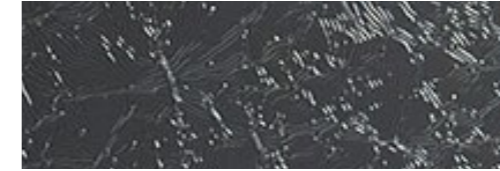
## ALUMINIUM



10.2372

PG: 3

52 70 89



10.2732

PG: 3

52 70 89



10.2414

PG: 2

52 70 89



10.2332

PG: 2

52 70 89



10.2375

PG: 3

52 70 89

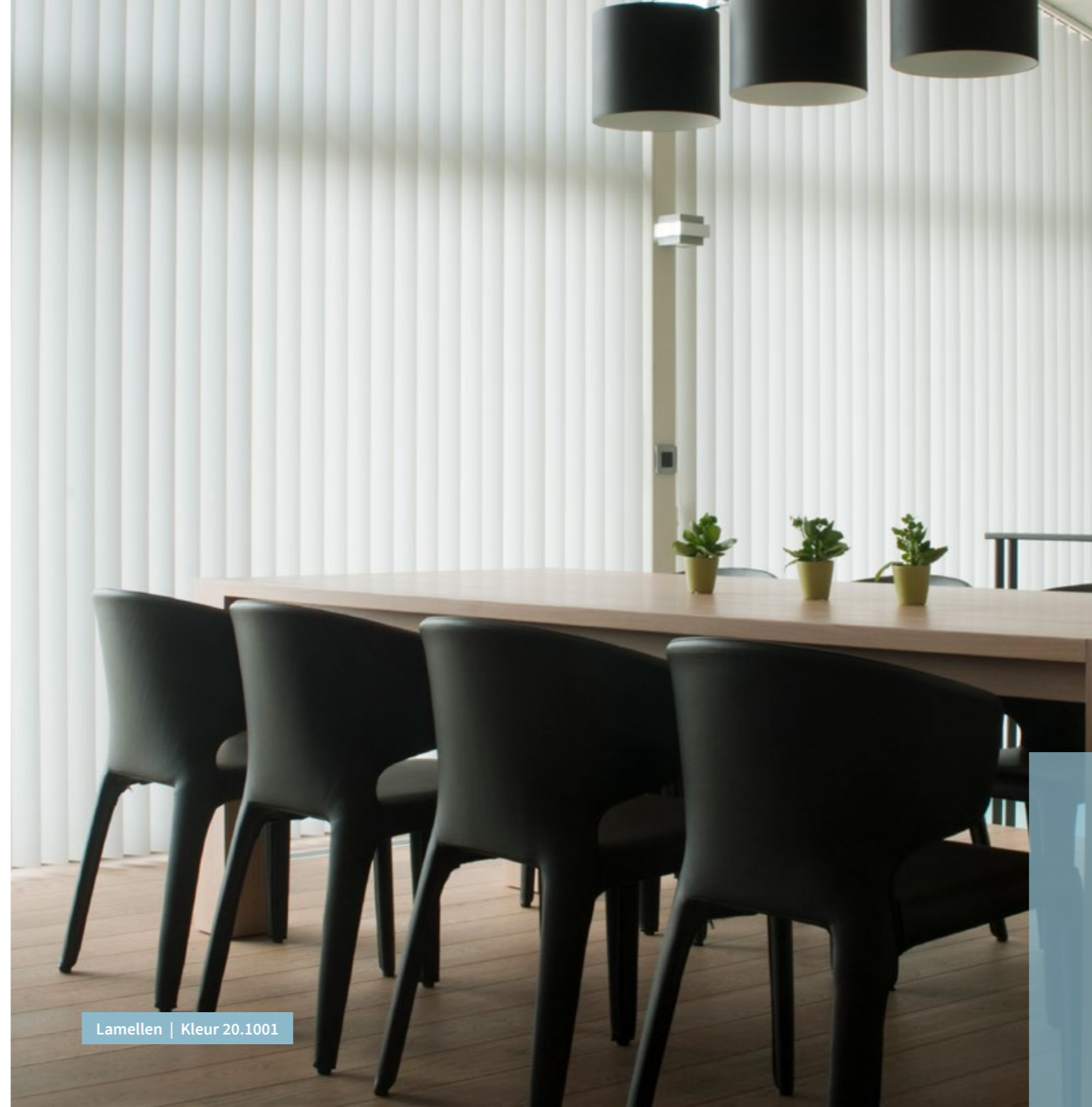




## MATERIAAL- EIGENSCHAPPEN

### MATERIAAL

De stoffen in de collectie lamellen bestaan uit 100% polyester (PES) stoffen, stoffen in een combinatie van polyester en PVC, 100% gerecycled PET stoffen, PVC en aluminium. Polyester is een synthetische vezel (kunstvezel) met een hoge slijtweerstand, een goede stabiliteit en een hoge lichtechtheid. Polyester krimpt en kreukt vrijwel niet, is goed te reinigen en goed bestand tegen zonlicht. PVC staat voor polyvinylchloride en is een thermoplast kunststof. PVC heeft als voordelen dat het goed verwerkbaar is, weinig brandbaar en zelfdovend is en dat het niet doordringbaar is voor zeer veel stoffen waaronder oliën. 100% gerecycled PET betekent dat de stoffen bestaan uit 100% gerecycled materiaal van PET flessen. Aluminium is sterk, duurzaam en onderhoudsarm.



Lamellen | Kleur 20.1001

### TRANSPARANTIES

De stoffen in de collectie lamellen bevatten stoffen in diverse transparanties: van transparant tot verduisterend plus. Een transparante stof zorgt voor een diffuse lichtinval en de kleur van de transparante stof bepaalt de mate van lichtinval. Lichte kleuren laten immers meer licht door dan donkere kleuren. Een verduisterend plus stof zorgt voor een hoge mate van verduistering, maar 100% is nooit te realiseren door de kier die ontstaat aan de zijkanten van de lamellen.

-  **Transparant**
-  **Semi-transparant**
-  **Verduisterend plus**

# ENERGIEWAARDEN

De stoffen in de collectie lamellen kennen een drietal eigenschappen: de transmissie van energie (TS), de reflectie van energie (RS) en de absorptie van energie (AS). De kenmerken transmissie van energie, reflectie van energie en de absorptie van energie hebben samen altijd een waarde van 100%.

## DE TRANSMISSIE VAN ENERGIE (TS)

De hoeveelheid zonne-energie die doorgelaten wordt door de stof. Hoe hoger het percentage, hoe meer energie wordt doorgelaten door de stof.

## DE REFLECTIE VAN ENERGIE (RS)

De hoeveelheid zonne-energie die weerkaatst wordt door de stof. Hoe hoger het percentage, hoe meer energie wordt gereflecteerd door de stof.

## DE ABSORPTIE VAN ENERGIE (AS)

De hoeveelheid zonne-energie die geabsorbeerd wordt door de stof. Hoe hoger het percentage, hoe meer energie wordt geabsorbeerd door de stof. Donkere stofkleuren absorberen bijvoorbeeld meer energie en geven meer warmte af.



# STOFWIJZER

Onder de diverse stoffen in de collectie stof vind je symbolen die de eigenschappen van de stof weergeven. Met behulp van de stofwijzer hieronder kun je bepalen welke stof het beste bij jouw wensen past. Heb je vragen over specifieke stoffeigenschappen? Ga dan langs bij de Verano® partner. Je vindt de dichtstbijzijnde partner snel en eenvoudig op [www.verano.nl](http://www.verano.nl).

**72.1831**

Kleurnummer

PG: **3**

Prijsgroep



Transparant



Semi-transparant



Lichtdoorlatend



Verduisterend plus

25% PES + 75% PVC

Samenstelling materiaal

89

Breedte lamel (mm)



Vlamvertragend

TS

Transmissie van energie (%)

RS

Reflectie van energie (%)

AS

Absorptie van energie (%)



De stofkleuren met dit symbool zijn ook verkrijgbaar in rolgordijnen.



Lamellen | Kleur 72.1715

| Kleurnummer lamel | Kleurnummer rolgordijn | Kleurnummer lamel | Kleurnummer rolgordijn |
|-------------------|------------------------|-------------------|------------------------|
| 76.0028           | 72.1402                | 76.0038           | 72.1522                |
| 76.0030           | 72.1448                | 76.0039           | 72.1588                |
| 76.0033           | 72.1443                | 76.0040           | 72.1526                |
| 76.0034           | 72.1477                | 76.0041           | 72.1532                |
| 76.0035           | 72.1403                | 76.0042           | 72.1503                |
| 76.0035           | 72.1403                | 76.0043           | 72.1507                |
| 76.0036           | 72.1482                | 76.0044           | 72.1546                |
| 76.0037           | 72.1502                | 76.0045           | 72.1545                |



 [facebook.com/verano.nl](https://facebook.com/verano.nl)  
[facebook.com/verano.be](https://facebook.com/verano.be)

 [veranobv](https://instagram.com/veranobv)

 [pinterest.com/veranobv](https://pinterest.com/veranobv)

 [Verano® Zonwering & Rolluiken](https://www.youtube.com/Verano%20Zonwering%20&%20Rolluiken)

 [www.verano.nl](https://www.verano.nl)  
[www.verano.be](https://www.verano.be)

Aan deze brochure kunnen geen rechten worden ontleend.  
23753977-191119

